

“App from Scratch” Seminar Series

Send ideas to
info@decisions.com

www.decisions.com/events

DECISIONS

September Free Training Event

Standard business analyst training on our primary designers with advanced breakout sessions including the developer SDK.

- Where:** Norfolk, VA, USA - Waterside Marriott
When: September 7th, 8th, and 9th
Who: Prospects, Customers, and Partners
Cost: Free

App from Scratch

Getting Started with a New Installation of Decisions

Today's Seminar

Building a workflow application from a fresh installation

Example: Corporate Travel Request

1. User Initiated Request
2. Task Assigned to Approver
3. Task Assigned to Travel Coordinator
4. Report(s)

done

done

Done

[Start Step]

done

Create Data

Done

[End Step]

Search

▼ Common Properties

Name

Create Data

✕

► Step Information (7)

▼ Data Definitions

DataDefinitions

| | |
|---------------|---|
| Item (String) | ✕ |
|---------------|---|

Add New

▼ Shape Settings

Shape Settings:[Square]

▼ Inputs

▼ Item

Mapping Type

Constant

Value

▼ Outputs

Edit Input Mapping (1) | Edit Output Mapping (1) | View Flow Data | Save As Template | Cut | Copy | Delete

Label

Better Forms

Additional Start Options

Integration with Other Systems

Button

What Comes Next?

Search

Favorite Components

Checkbox

Data Grid

DateTime Picker

Drop Down List

File Download

File Upload

Image

Label

Text Block

Text Box

Recent Components

Actions

Appearance

Default Form Font:Font: Arial, 11 px

Design Size

Designer Width

800

Designer Height

600

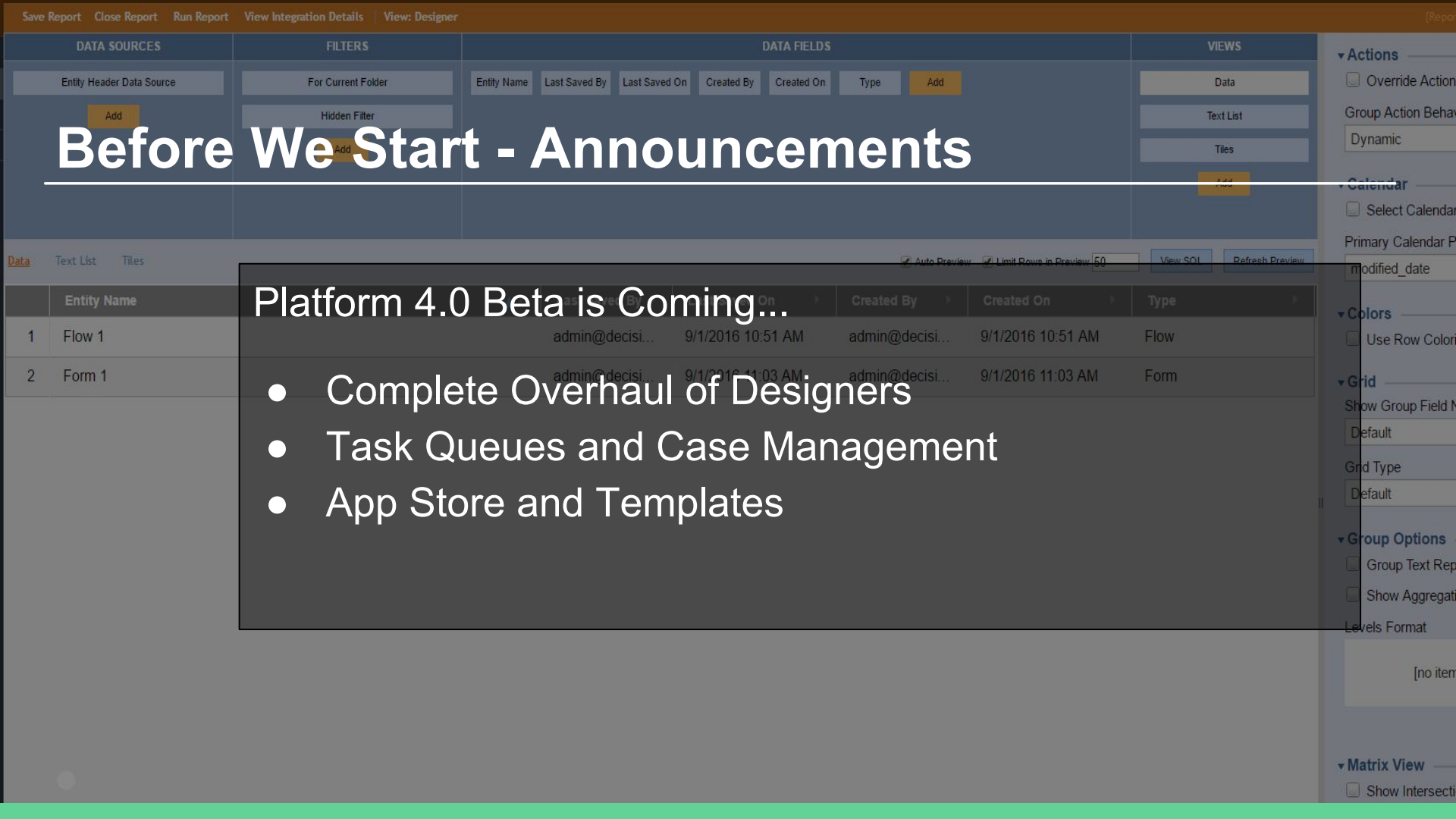
Form Background

Pick Form Background

Before We Start - Announcements

Platform 4.0 Beta is Coming...

- Complete Overhaul of Designers
- Task Queues and Case Management
- App Store and Templates





Let's Get Started!

Sequential or Rule Driven Workflow

Sequential

- The data is only useful from start to end (and history)
- The process is predictable
- The state of the data is completely governed by which step you're on
- The process is central

Rule Driven

- The data is useful across many actions / workflows
- The process is not predictable
- The activities, actions are governed by the state of the data
- The entity (data) is central



BROWSE

My Tasks

Cases

My Designs

System

Task Queues

Current Report: All Folder Entities [Change Report](#)

Entity Name

Last Saved...

Last Saved On

Created By

Created On

Resources

1. <http://documentation.decisions.com>
2. <http://support.decisions.com/forum/>
3. Events List - decisions.com/events
4. Rule Driven eBook - decisions.com/ebooks
5. support@decisions.com